

Maldives Land and Survey Authority,

MINISTRY OF HOUSING AND INFRASTRUCTURE

Ameenee Magu, Maafannu, Male', 20392, Maldives.

Office (PABX): +(960)3004300, Fax: +(960)3004254

Email: survey@mhe.gov.mv

Web: www.surveyofmaldives.gov.mv, www.mhe.gov.mv



CONTROL POINT DETAILS		Station Number
		PSM 5917
Coordinate Information		
Geodetic		Grid
WGS 84		UTM Zone 43
Lat: 3° 53' 03.8385" N		E: 247513.872
Long: 72° 43' 34.9564" E		N: 429688.968
Ellp Height: -94.859 m		Orth Height: 0.918 m
Island Name: Adh.Moofushi		Date: 10/07/2023

Monument description & method of survey:

- Type A Monument, Concrete casted in situ to a diameter 300mm pvc pipe, 1000mm in length, 1500mm ss bar driven to the ground with center marked aluminum cap on top.
- Monument labeled with a ss plate stating the point id PSM 5917 as recommended by MSLA.
- Stainless steel plate fixed to concrete by four bolts.
- PSM below 100mm of ground level
- Horizontal coordinates fixed by GNSS Static survey.
- Vertical datum corrected to MSL established by maldives meteorological servuces for Hulhule' tide gauge.
- PSM5917 is inter-visible to PSM 5918.

General site condition & access:

- Open Area
- Clear Sky View
- Near by the boat house on North-West side of the island

Owner: Constance Moofushi

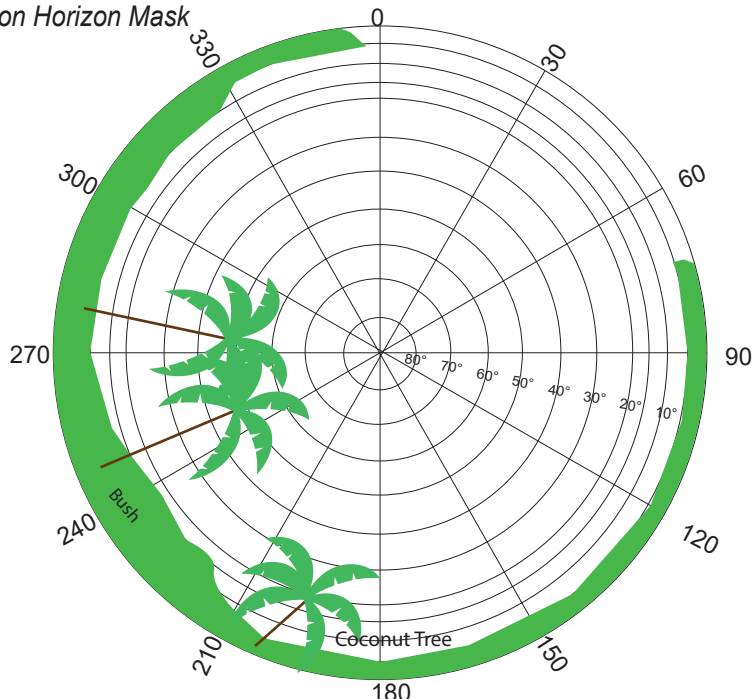


SITE INFORMATION

Station Number

PSM 5917

Station Horizon Mask

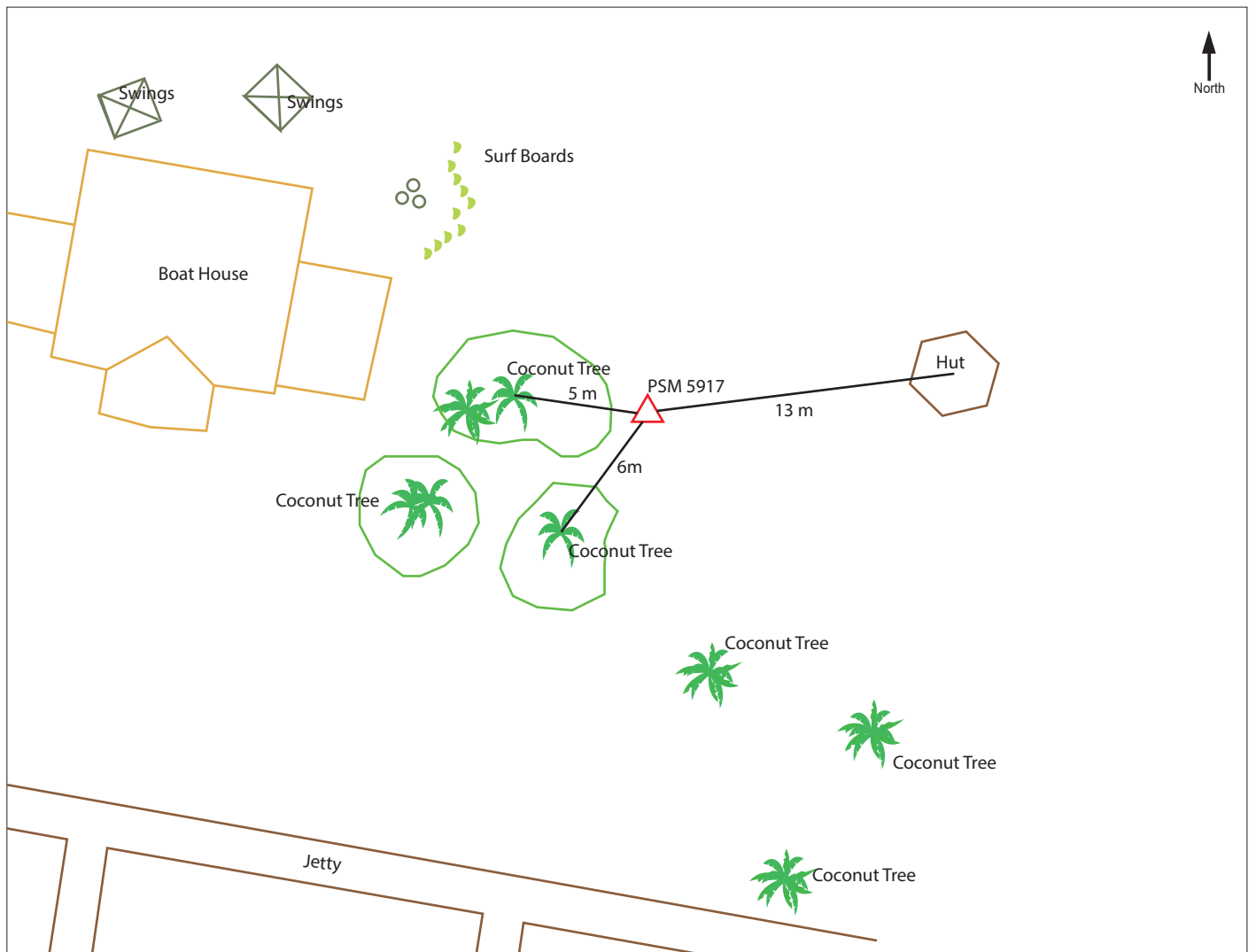


Height above Marker that horizon was mapped from 1.5 m

Magnetic Declination
Declination applied to this figure ?
☐ Yes ☒ No



Locality



Sketched by: Hussain Aflaan

Scale: Not to scale

Date: 10/07/2023

Maldives Land and Survey Authority,

MINISTRY OF HOUSING AND INFRASTRUCTURE

Ameenee Magu, Maafannu, Male', 20392, Maldives.

Office (PABX): +(960)3004300, Fax: +(960)3004254

Email: survey@mhe.gov.mv

Web: www.surveyofmaldives.gov.mv, www.mhe.gov.mv



CONTROL POINT DETAILS

Station Number PSM 5918

Coordinate Information

Geodetic

Grid

WGS 84

UTM Zone 43

Lat: 3° 53' 05.0893" N

E: 247590.383

Long: 72° 43' 37.4321" E

N: 429727.200

Ellp Height: -94.795

Orth Height: 0.977

Island Name: Adh.Moofushi

Date: 10/07/2023

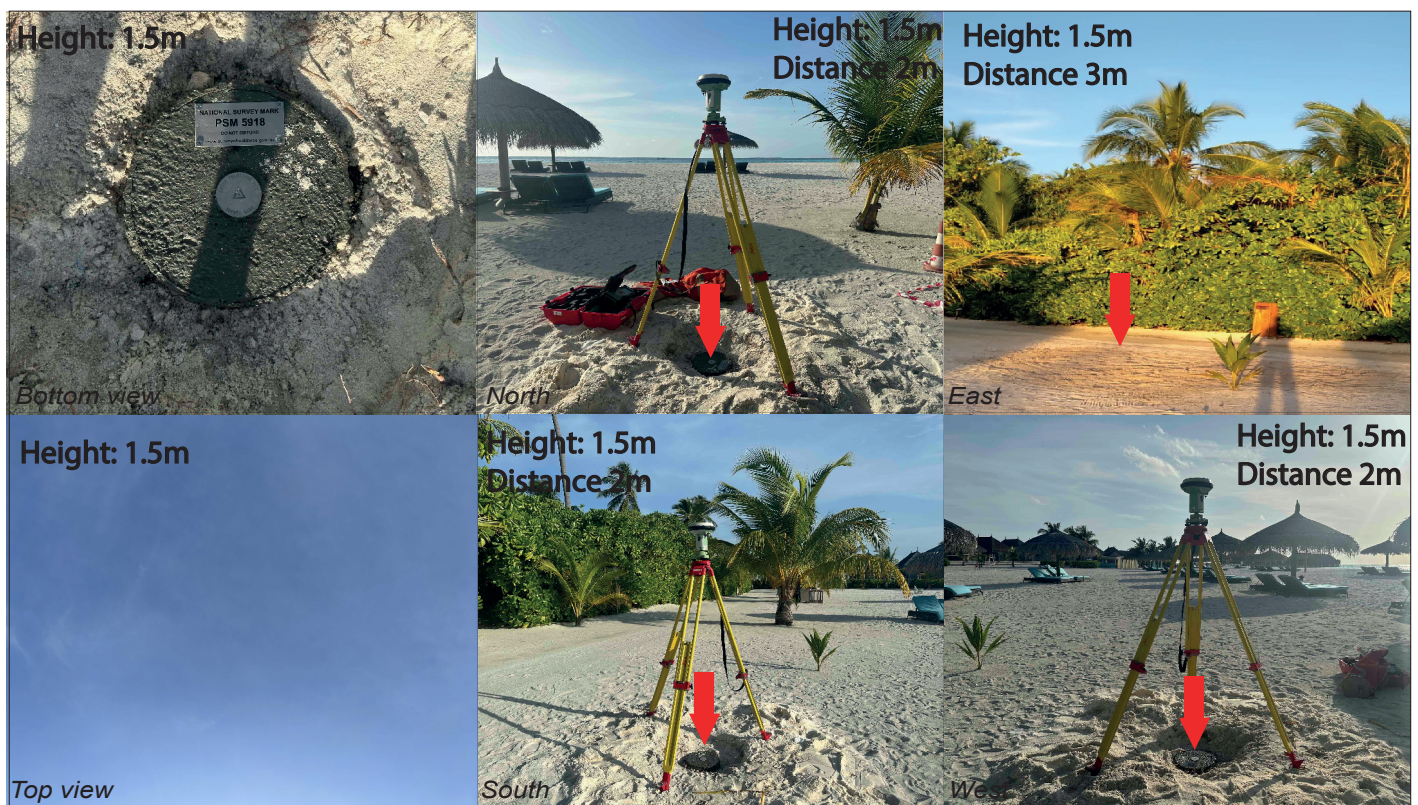
Monument description & method of survey:

- Type A Monument specifications (with a 0.3m X 0.3m X 1.0m Concrete Column)
- Stainless steel plate fixed to concrete by four bolts
- PSM below 100mm of ground level
- Horizontal coordinates fixed by GNSS Static survey.
- Vertical height corrected using tide prediction data and water level correction to PSM5917
- PSM 5917 and PSM 5918 are intervisible to each other

General site condition & access:

- Open Area
- Clear Sky View
- North-west of Sunset Beach

Owner: Constance Moofushi



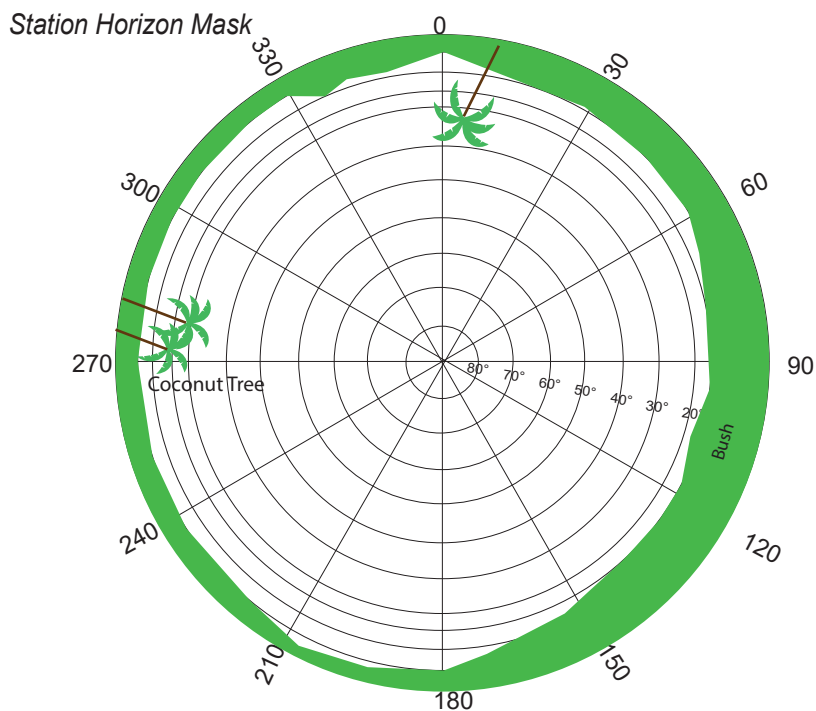
SITE INFORMATION

Station Number

PSM 5918

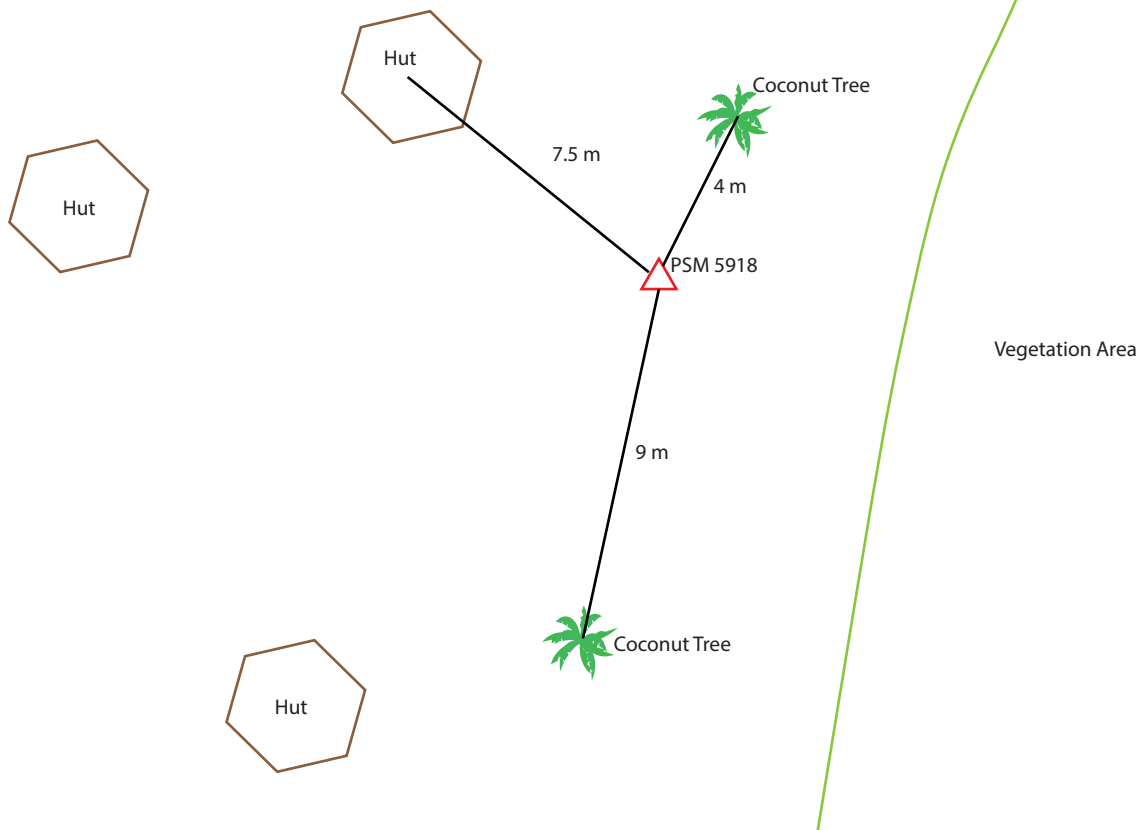
Station Horizon Mask

Locality



Height above Marker that horizon was mapped from 1.5 m

Magnetic Declination
Declination applied to this figure ?
☐ Yes ☒ No



Sketched by: Hussain Aflaan

Scale: Not to scale

Date: 10/07/2023

Maldives Land and Survey Authority,

MINISTRY OF HOUSING AND INFRASTRUCTURE

Ameenee Magu, Maafannu, Male', 20392, Maldives.

Office (PABX): +(960)3004300, Fax: +(960)3004254

Email: survey@mhe.gov.mv

Web: www.surveyofmaldives.gov.mv, www.mhe.gov.mv



CONTROL POINT DETAILS

Station Number PSM 5919

Coordinate Information

Geodetic

Grid

WGS 84

UTM Zone 43

Lat: 3° 53' 07.2656" N

E: 247779.379

Long: 72° 43' 43.5499" E

N: 429793.563

Ellp Height: -94.915 m

Orth Height: 0.846 m

Island Name: Adh.Moofushi

Date: 10/07/2023

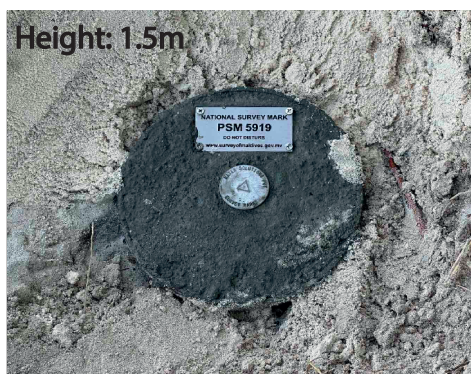
Monument description & method of survey:

- Type A Monument, Concrete casted in situ to a diameter 300mm pvc pipe, 1000mm in length, 1500mm ss bar driven to the ground with center marked aluminum cap on top.
- Monument labeled with a ss plate stating the point id PSM 5917 as recommended by MSLA.
- Stainless steel plate fixed to concrete by four bolts
- PSM below 100mm of ground level
- Horizontal coordinates fixed by GNSS Static survey.
- Vertical height corrected using tide prediction data and water level correction to PSM 5917.

General site condition & access:

- Open Area
- Clear Sky View
- North-East Side Of Arrival Jetty

Owner: Constance Moofushi



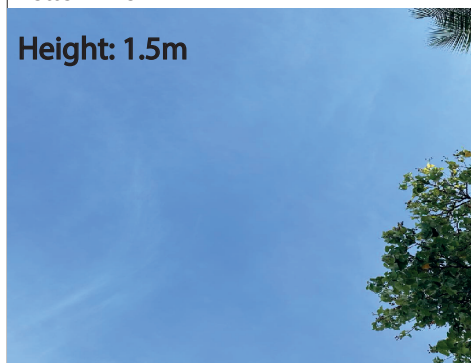
Bottom view



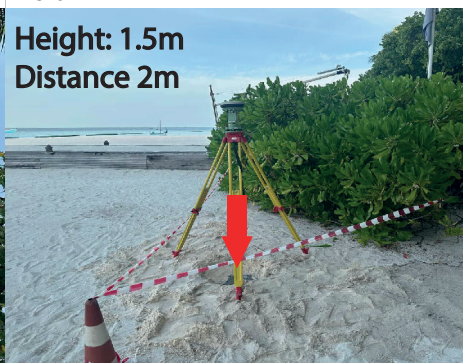
North



East



Top view



South



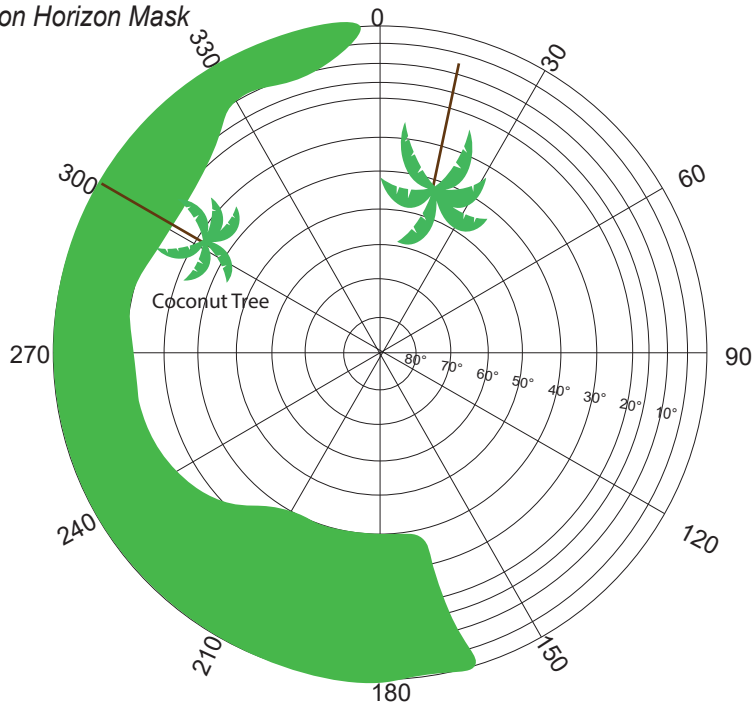
West

SITE INFORMATION

Station Number

PSM 5919

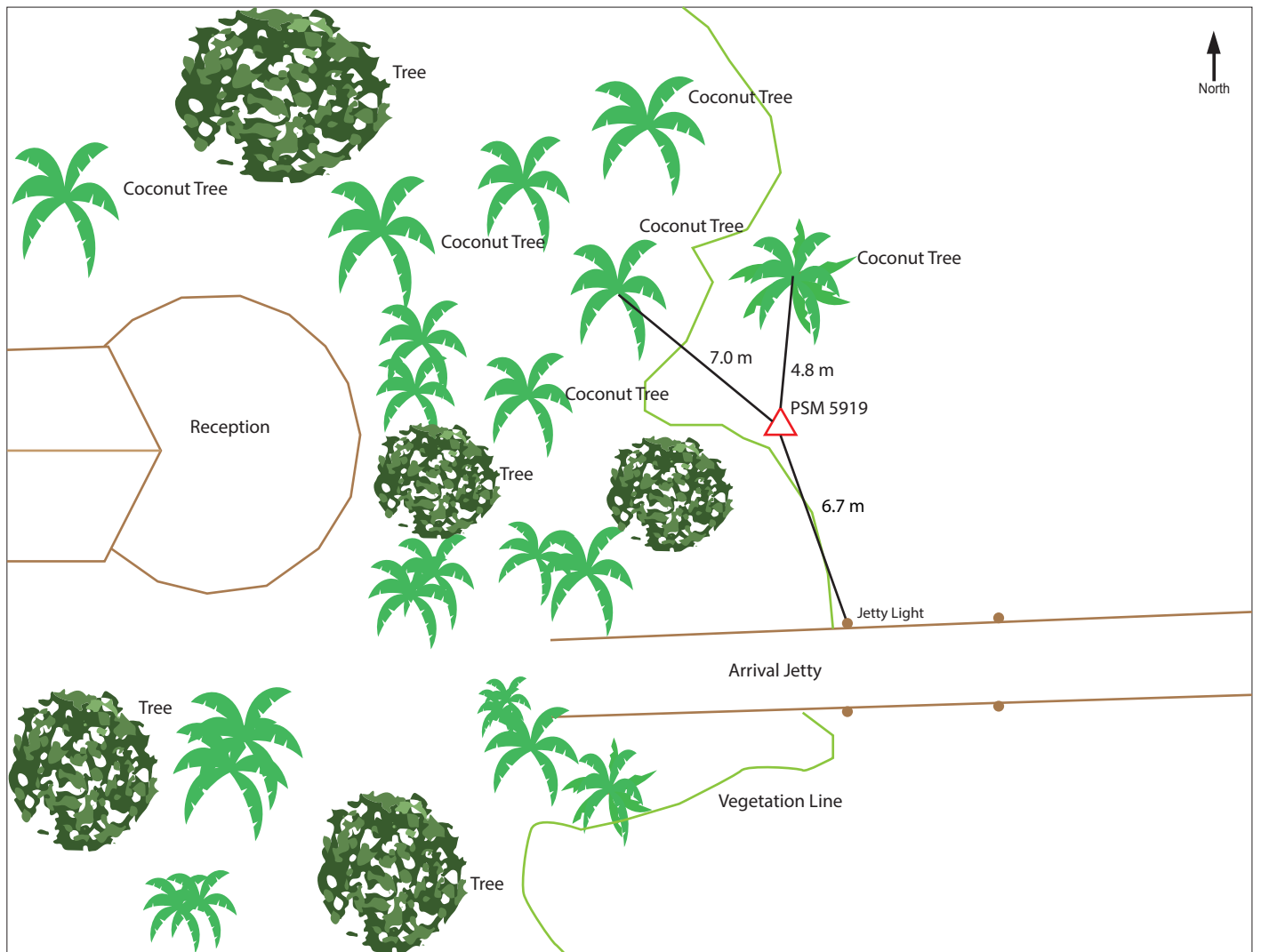
Station Horizon Mask



Height above Marker that horizon was mapped from 1.5 m

Magnetic Declination
Declination applied to this figure ?
☐ Yes ☒ No

Locality



Sketched by: Hussain Aflaan

Scale: Not to scale

Date: 10/07/2023