

MALDIVES LAND AND SURVEY AUTHORITY

MINISTRY OF HOUSING AND INFRASTRUCTURE

Office (PABX): +(960) 3004300, Fax: +(960) 3004254

Ameenee Magu, Maafannu, Male', 20392, Maldives.

Email: survey@housing.gov.mv

Web: www. surveyofmaldives.gov.mv



CONTROL POINT DETAILS	Station Number PSM5875
Coordinate Information	
Geodetic	Grid
WGS 84	UTM Zone 43
Lat:	E: 251373.083
Long:	N: 386567.436
Ellp Height:	Orth Height: 1.354
Island Name: ADH. Bodufinolhu (LD0220)	Date: 01-11-2022

Monument description & method of survey

- Monument type A. Concrete casted in situ to a diameter 0.3m pvc pipe, 1m in length, 1.5m s/s rod driven to ground with center point punched. Monument labeled with s/s plate stating the point ID
- Above 100mm from ground level
- Static Survey 3D control by GNSS post processing including point 102
- Vertical height corrected using tide prediction data (Hulhule) using Water level point (102)
- PSM5875 is visible to PSM5876

General site condition & access:

- Infront of Lagoon bar and Water sports Building
- Easily Access

Owner: Browns Ari Resort Pvt Ltd



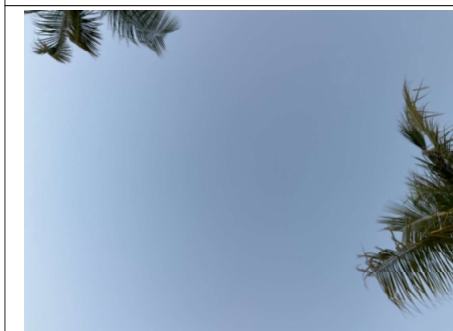
DOWN TOWARD PSM



Height 1.2m Distance 3m
NORTH VIEW



Height 1.2m Distance 3m
EAST VIEW



Height 1.5m
FROM PSM UPTOWARD SKY



Height 1.2m Distance 3m
SOUTH VIEW



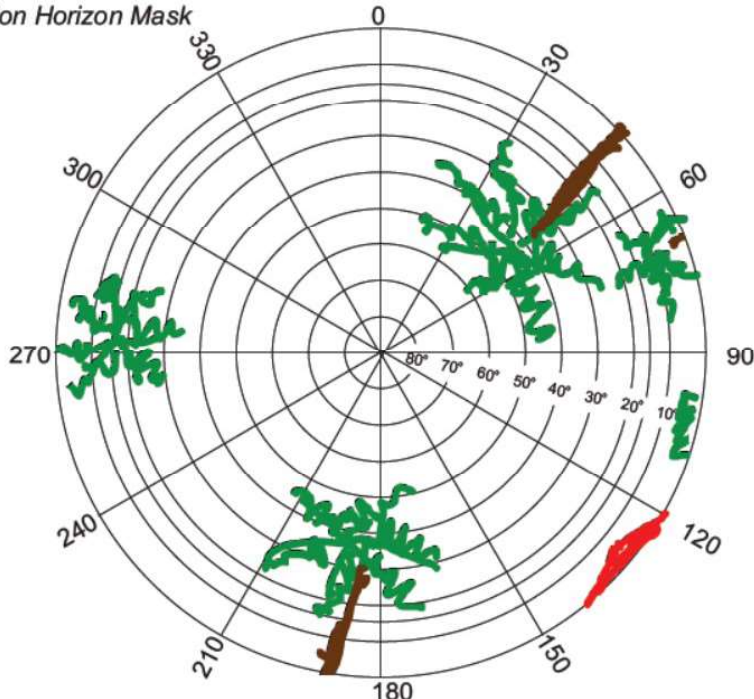
Height 1.2m Distance 3m
WEST VIEW

SITE INFORMATION

Station Number

P	S	M	5	8	7	5
---	---	---	---	---	---	---

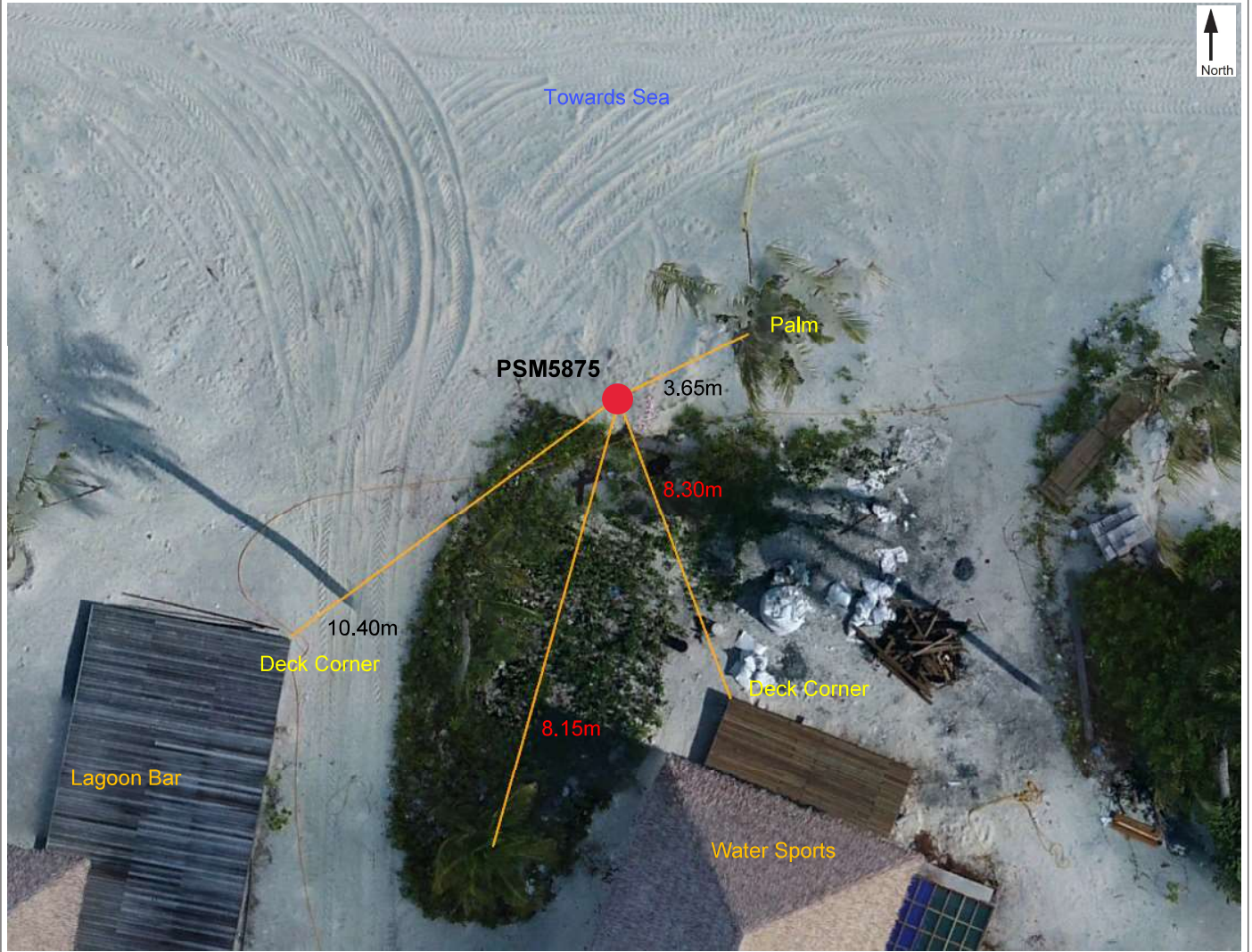
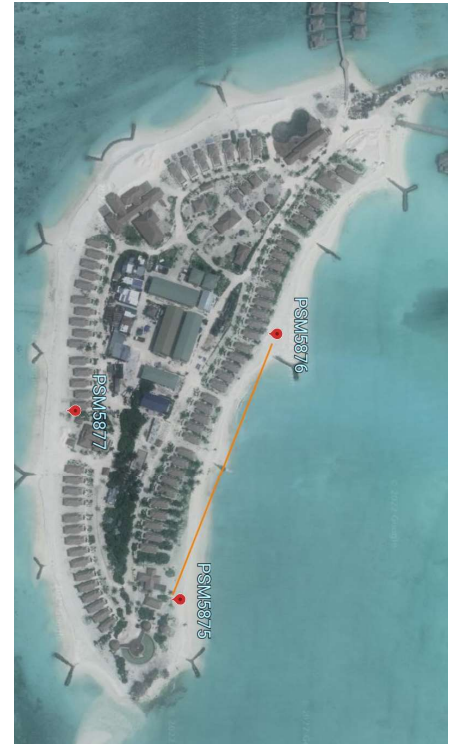
Station Horizon Mask



Height above Marker that horizon was mapped from 1.5 m

Magnetic Declination _____
 Declination applied to this figure?
 Yes No

Locality



Sketched by: **Ahmed**

Scale: Not to scale

Date: **02-11-2022**

MALDIVES LAND AND SURVEY AUTHORITY

MINISTRY OF HOUSING AND INFRASTRUCTURE

Office (PABX): +(960) 3004300, Fax: +(960) 3004254

Ameenee Magu, Maafannu, Male', 20392, Maldives.

Email: survey@housing.gov.mv

Web: www. surveyofmaldives.gov.mv



CONTROL POINT DETAILS	Station Number PSM5876
Coordinate Information	
Geodetic	Grid
WGS 84	UTM Zone 43
Lat:	E: 251146.585
Long:	N: 386650.807
Ellp Height:	Orth Height: 1.414
Island Name: ADH. Bodufinolhu (LD0220)	Date: 01-11-2022

Monument description & method of survey

- Monument type A. Concrete casted in situ a diameter 0.3m pvc pipe, 1m in length, 1.5m s/s rod driven to ground with center point punched. Monument labeled with s/s plate stating the point ID
- Ground level
- Static Survey 3D control by GNSS post processing including point 102
- Vertical height corrected using tide prediction data (Hulhule) using Water level point (102)
- PSM5876 is visible to PSM5875

General site condition & access:

- Infront of Beach Villa 13 and Beach Villa 14
- Easily Access

Owner: Browns Ari Resort Pvt Ltd



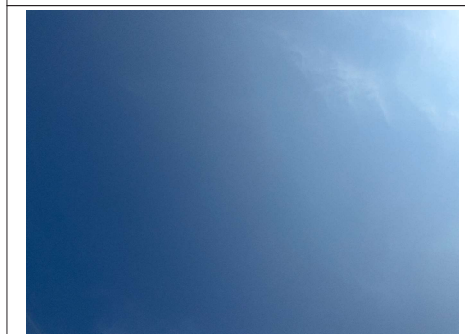
DOWN TOWARD PSM



Height 1.2m Distance 3m
NORTH VIEW



Height 1.2m Distance 3m
EAST VIEW



Height 1.5m
FROM PSM UPTOWARD SKY



Height 1.2m Distance 3m
SOUTH VIEW



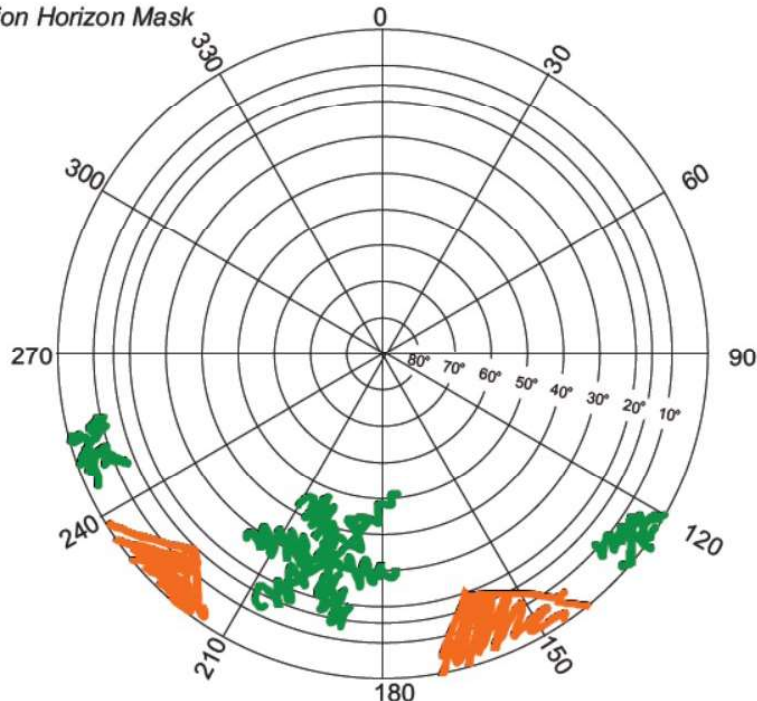
Height 1.2m Distance 3m
WEST VIEW

SITE INFORMATION

Station Number

P	S	M	5	8	7	6
---	---	---	---	---	---	---

Station Horizon Mask



Height above Marker that horizon was mapped from 1.5 m

Magnetic Declination
Declination applied to this figure?
 Yes No

Locality



Sketched by: Ahmed

Scale: Not to scale

Date: 02-11-2022

MALDIVES LAND AND SURVEY AUTHORITY

MINISTRY OF HOUSING AND INFRASTRUCTURE

Office (PABX): +(960) 3004300, Fax: +(960) 3004254

Ameenee Magu, Maafannu, Male', 20392, Maldives.

Email: survey@housing.gov.mv

Web: www. surveyofmaldives.gov.mv



CONTROL POINT DETAILS	Station Number PSM5877
Coordinate Information	
Geodetic	Grid
WGS 84	UTM Zone 43
Lat:	E: 251211.220
Long:	N: 386477.846
Ellp Height:	Orth Height: 1.452
Island Name: ADH. Bodufinolhu (LD0220)	Date: 01-11-2022

Monument description & method of survey

- Monument type A. Concrete casted in situ to a diameter 0.3m pvc pipe, 1m in length, 1.5m s/s rod driven to ground with center point punched. Monument labeled with s/s plate stating the point ID
- Below 100mm from ground level
- Static Survey 3D control by GNSS post processing including point 102
- Vertical height corrected using tide prediction data (Hulhule) using Water level point (102)

General site condition & access:

- Infront of Beach Villa 49 and Speciality Restaurant
- Easily Access

Owner: Browns Ari Resort Pvt Ltd



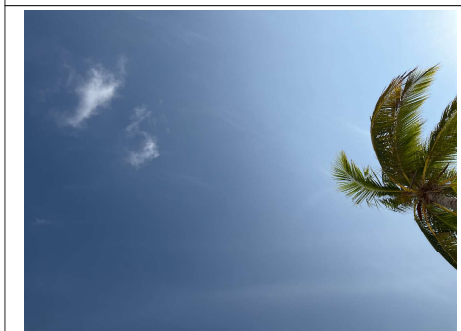
DOWN TOWARD PSM



Height 1.2m Distance 3m
NORTH VIEW



Height 1.2m Distance 3m
EAST VIEW



Height 1.5m
FROM PSM UPTOWARD SKY



Height 1.2m Distance 3m
SOUTH VIEW

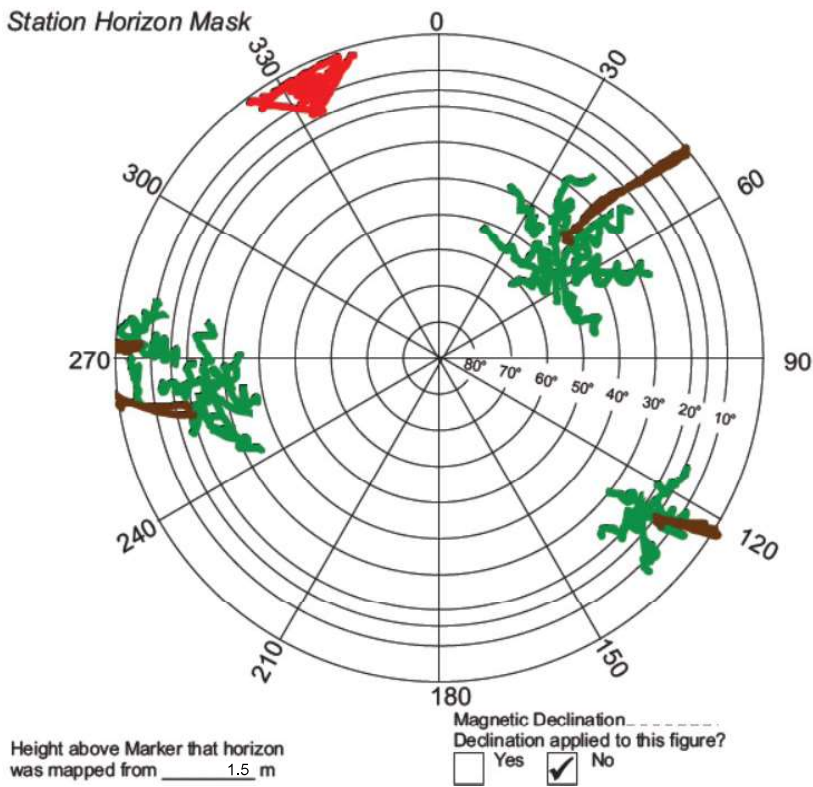


Height 1.2m Distance 3m
WEST VIEW

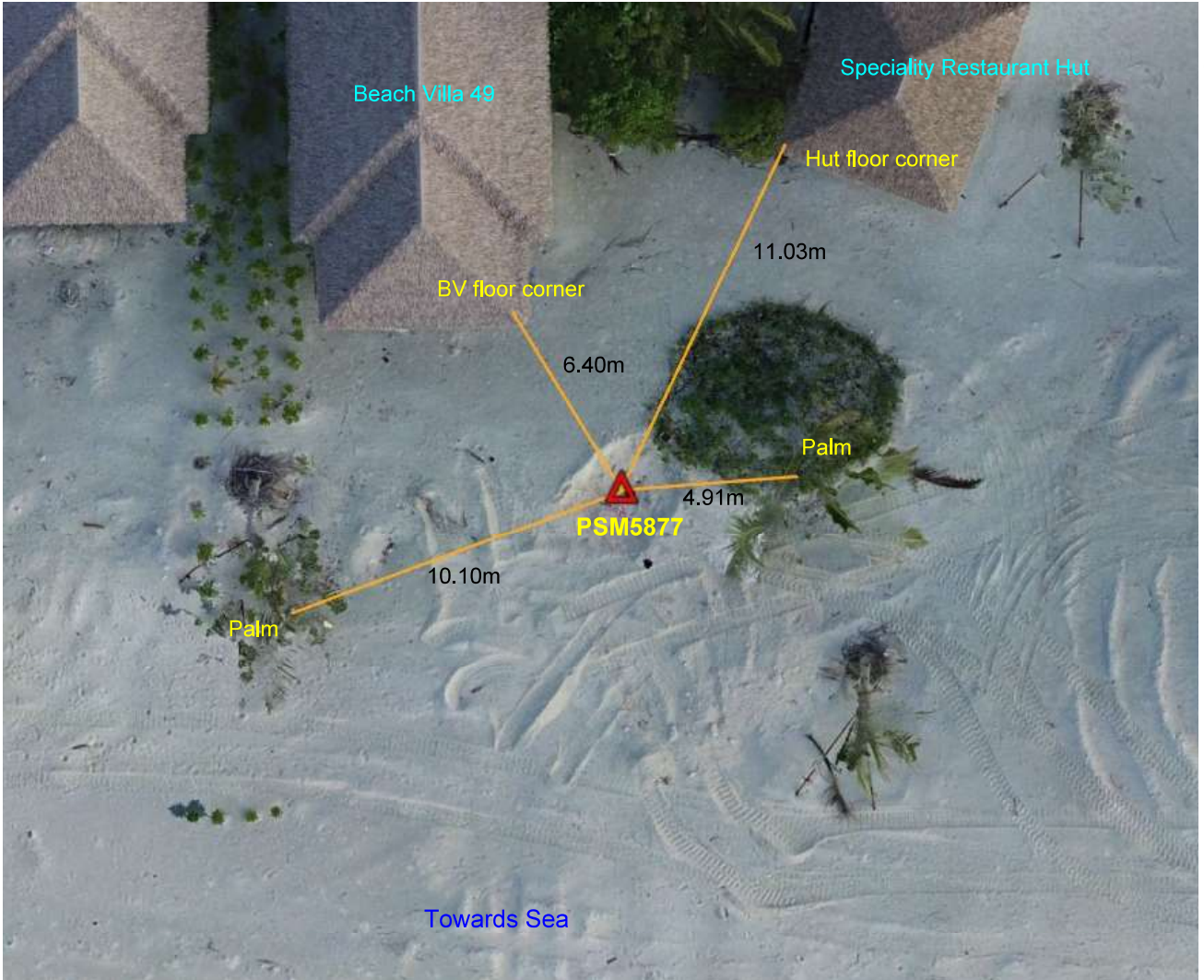
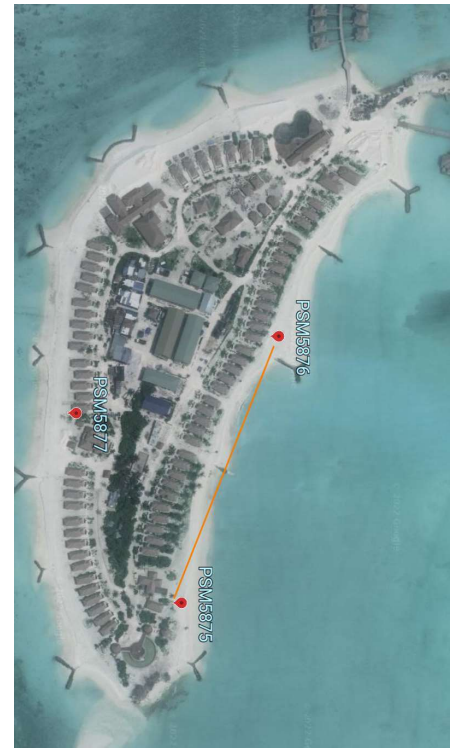
SITE INFORMATION

Station Number

P	S	M	5	8	7	7
---	---	---	---	---	---	---



Locality



Sketched by: Ahmed

Scale: Not to scale

Date: 02-11-2022