

# MALDIVES LAND AND SURVEY AUTHORITY

MINISTRY OF HOUSING AND INFRASTRUCTURE

Office (PABX): +(960) 3004300, Fax: +(960) 3004254

Ameenee Magu, Maafannu, Male', 20392, Maldives.

Email: survey@housing.gov.mv

Web: www. surveyofmaldives.gov.mv



|   |                               |
|---|-------------------------------|
| <b>CONTROL POINT DETAILS</b>            | <b>Station Number</b> PSM5899 |
| <b>Coordinate Information</b>           |                               |
| <b>Geodetic</b>                         | <b>Grid</b>                   |
| <b>WGS 84</b>                           | <b>UTM Zone 43</b>            |
| Lat:                                    | E: 273964.454                 |
| Long:                                   | N: 780090.382                 |
| Ellp Height:                            | Orth Height: 1.689            |
| <b>Island Name:</b> HA. Madulu (LD0909) | <b>Date:</b> 06-05-2023       |

### Monument description & method of survey

- Monument type A. Concrete casted in situ to a diameter 0.3m pvc pipe, 1m in length, 1.5m s/s rod driven to ground with center point punched marked. Monument labeled with s/s plate stating the point ID
- Above 150mm from ground level
- Static Survey 3D control by GNSS post processing
- Vertical height corrected using tide prediction data (Hanimaadhoo)

### General site condition & access:

- Located at South Western side clearing near tempopary shed
- Easily Accessible

**Owner:** Mafhaa Pvt Ltd



DOWN TOWARD PSM



Height 1.5m Distance 3m  
NORTH VIEW



Height 1.5m Distance 1m  
EAST VIEW



Height 1.5m  
FROM PSM UPTOWARD SKY



Height 1.5m Distance 2m  
SOUTH VIEW



Height 1.5m Distance 2m  
WEST VIEW

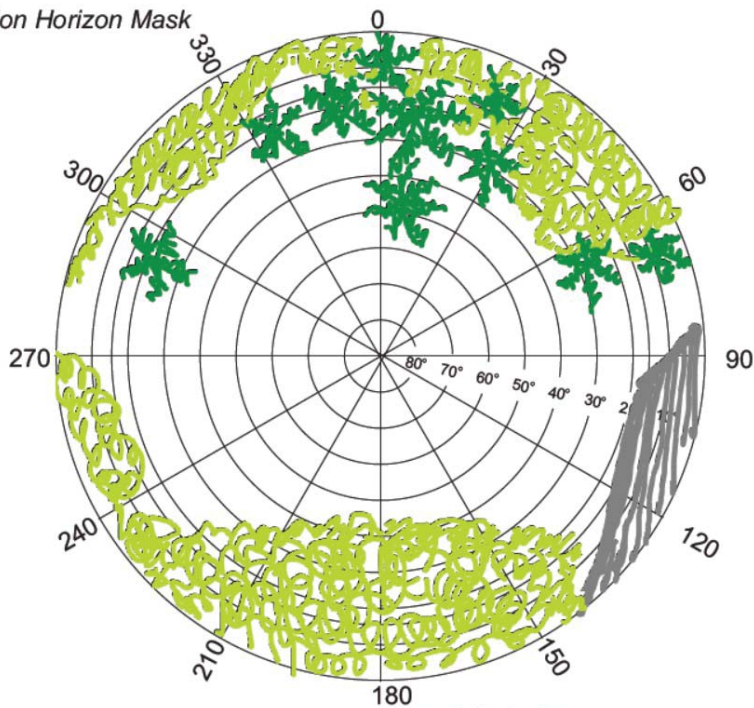


**SITE INFORMATION**

Station Number

|   |   |   |   |   |   |   |
|---|---|---|---|---|---|---|
| P | S | M | 5 | 8 | 9 | 9 |
|---|---|---|---|---|---|---|

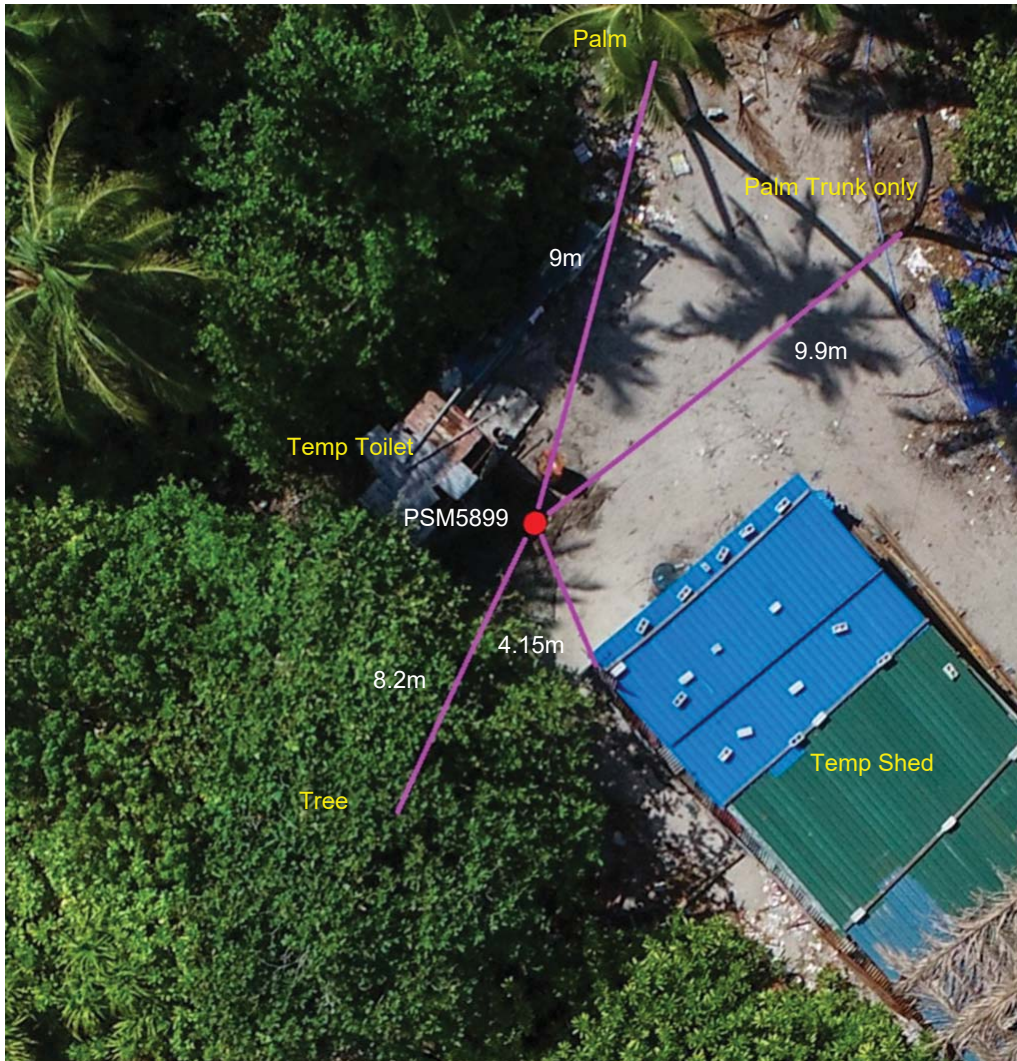
Station Horizon Mask



Height above Marker that horizon was mapped from 1.5 m

Magnetic Declination 3°  
 Declination applied to this figure?  
 Yes  No

Locality



Sketched by: Ahmed

Scale: Not to scale

Date: 08-05-2023



# MALDIVES LAND AND SURVEY AUTHORITY

MINISTRY OF HOUSING AND INFRASTRUCTURE

Office (PABX): +(960) 3004300, Fax: +(960) 3004254

Ameenee Magu, Maafannu, Male', 20392, Maldives.

Email: survey@housing.gov.mv

Web: www. surveyofmaldives.gov.mv



|   |                               |
|---|-------------------------------|
| <b>CONTROL POINT DETAILS</b>            | <b>Station Number</b> PSM5900 |
| <b>Coordinate Information</b>           |                               |
| <b>Geodetic</b>                         | <b>Grid</b>                   |
| <b>WGS 84</b>                           | <b>UTM Zone 43</b>            |
| Lat:                                    | E: 273952.942                 |
| Long:                                   | N: 780247.215                 |
| Ellp Height:                            | Orth Height: 1.110            |
| <b>Island Name:</b> HA. Madulu (LD0909) | <b>Date:</b> 06-05-2023       |

### Monument description & method of survey

- Monument type A. Concrete casted in situ to a diameter 0.3m pvc pipe, 1m in length, 1.5m s/s rod driven to ground with center point punched marked. Monument labeled with s/s plate stating the point ID
- Above 200mm from ground level
- Static Survey 3D control by GNSS post processing
- Vertical height relative to PSM5899
- Inter-visible to PSM5901

### General site condition & access:

- Located in the middle of the island previously cleared for farming
- Easily Accessible

**Owner:** Mafhaa Pvt Ltd



DOWN TOWARD PSM



Height 1.5m Distance 2m  
NORTH VIEW



Height 1.5m Distance 2m  
EAST VIEW



Height 1.5m  
FROM PSM UPTOWARD SKY



Height 1.5m Distance 2m  
SOUTH VIEW



Height 1.5m Distance 2m  
WEST VIEW

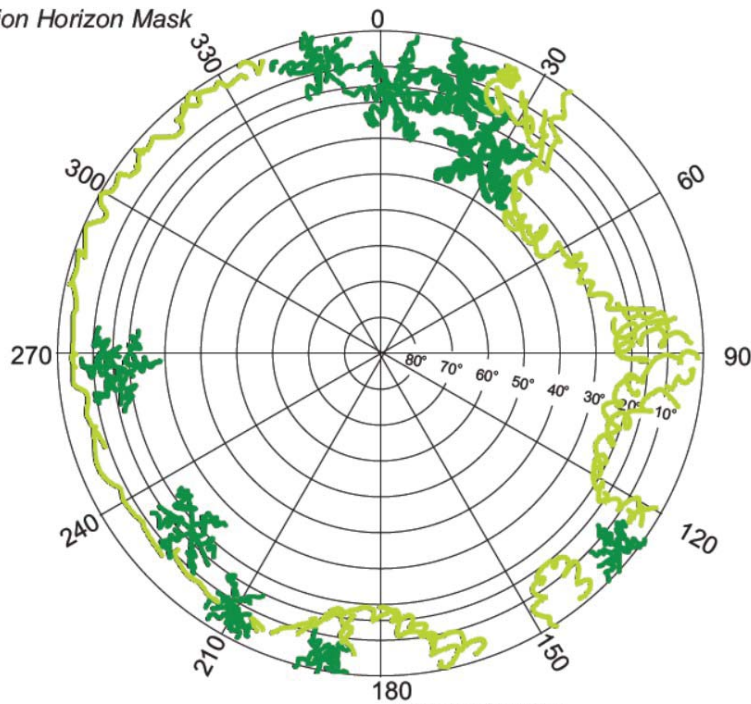


**SITE INFORMATION**

Station Number

|   |   |   |   |   |   |   |
|---|---|---|---|---|---|---|
| P | S | M | 5 | 9 | 0 | 0 |
|---|---|---|---|---|---|---|

Station Horizon Mask



Height above Marker that horizon was mapped from 1.5 m

Magnetic Declination \_\_\_\_\_  
 Declination applied to this figure?  
 Yes  No



Locality



Sketched by: Ahmed

Scale: Not to scale

Date: 08-05-2023



# MALDIVES LAND AND SURVEY AUTHORITY

MINISTRY OF HOUSING AND INFRASTRUCTURE

Office (PABX): +(960) 3004300, Fax: +(960) 3004254

Ameenee Magu, Maafannu, Male', 20392, Maldives.

Email: survey@housing.gov.mv

Web: www. surveyofmaldives.gov.mv



|   |                               |
|---|-------------------------------|
| <b>CONTROL POINT DETAILS</b>            | <b>Station Number</b> PSM5901 |
| <b>Coordinate Information</b>           |                               |
| <b>Geodetic</b>                         | <b>Grid</b>                   |
| <b>WGS 84</b>                           | <b>UTM Zone 43</b>            |
| Lat:                                    | E: 273870.300                 |
| Long:                                   | N: 780268.569                 |
| Ellp Height:                            | Orth Height: 1.543            |
| <b>Island Name:</b> HA. Madulu (LD0909) | <b>Date:</b> 06-05-2023       |

### Monument description & method of survey

- Monument type A. Concrete casted in situ to a diameter 0.3m pvc pipe, 1m in length, 1.5m s/s rod driven to ground with center point punched marked. Monument labeled with s/s plate stating the point ID
- Above 250mm from ground level
- Static Survey 3D control by GNSS post processing
- Vertical height relative to PSM5899
- Inter-visible to PSM5900

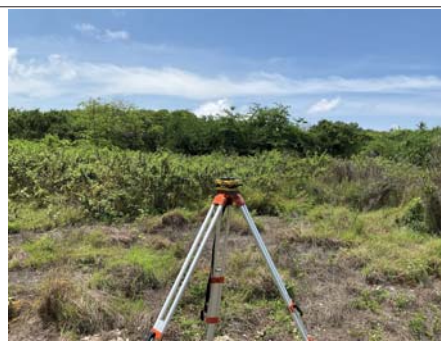
### General site condition & access:

- Located at middle of the island toward the western side, area previously cleared for farming.
- Near an Old well
- Easily Accessible

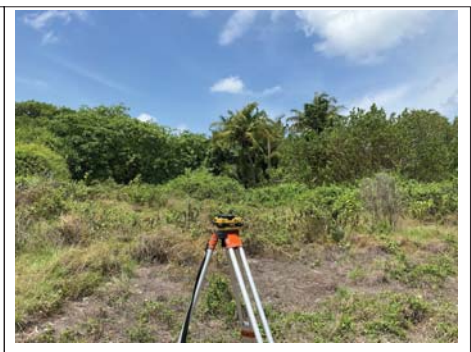
**Owner:** Mafhaa Pvt Ltd



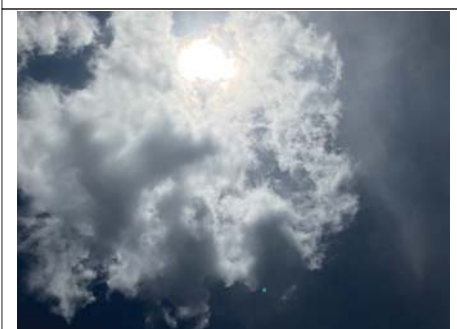
DOWN TOWARD PSM



Height 1.5m  
Distance 2m  
NORTH VIEW



Height 1.5m  
Distance 2m  
EAST VIEW



Height 1.5m  
FROM PSM UPTOWARD SKY



Height 1.5m  
Distance 2m  
SOUTH VIEW



Height 1.5m  
Distance 2m  
WEST VIEW

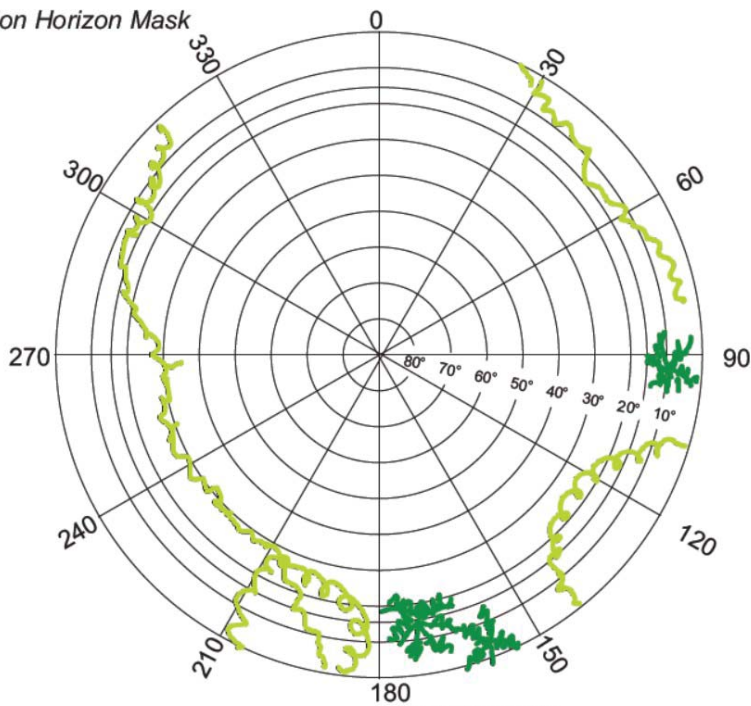


**SITE INFORMATION**

Station Number

|   |   |   |   |   |   |   |
|---|---|---|---|---|---|---|
| P | S | M | 5 | 9 | 0 | 1 |
|---|---|---|---|---|---|---|

Station Horizon Mask

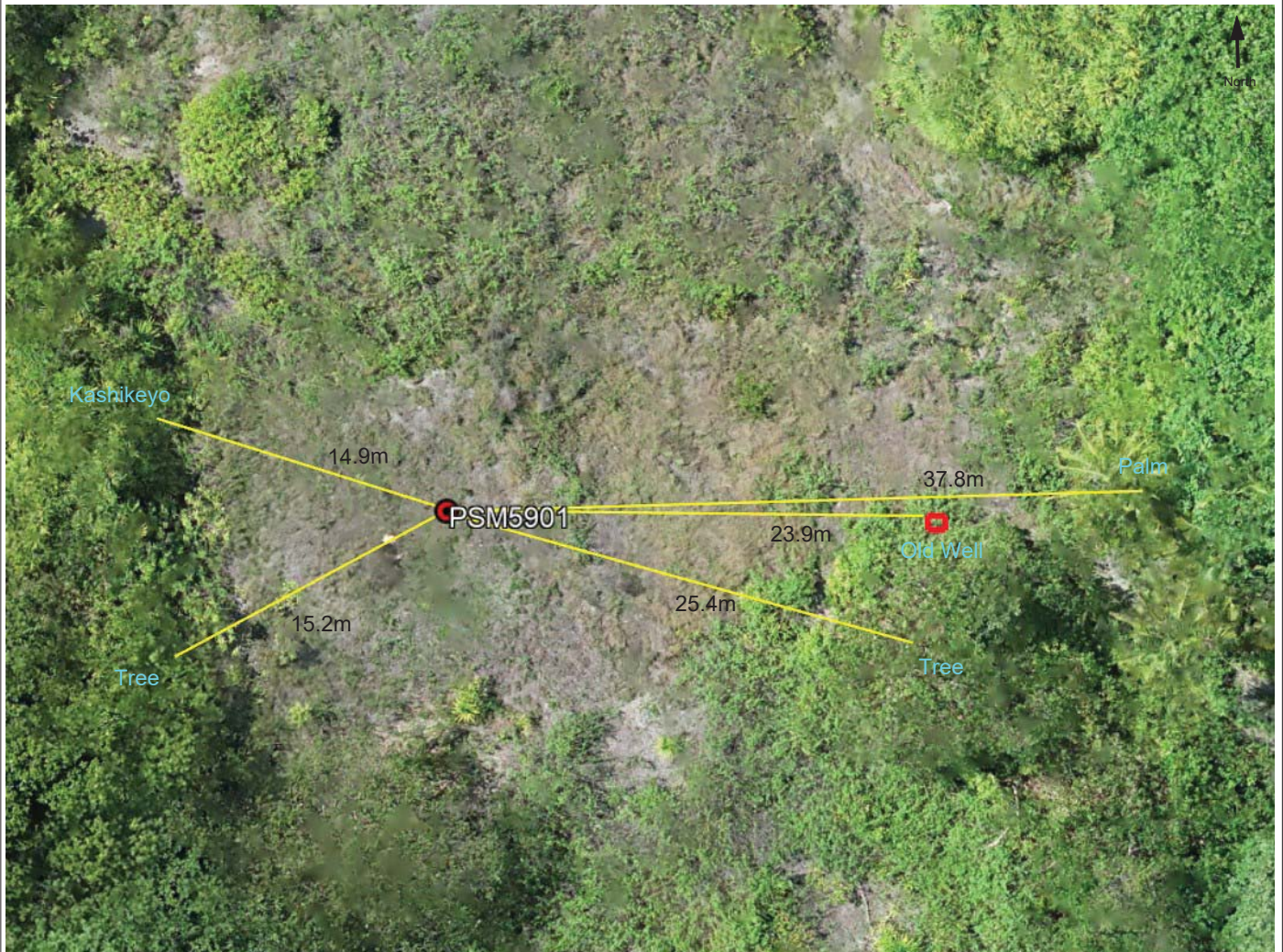


Height above Marker that horizon was mapped from \_\_\_\_\_ 1.5 m

Magnetic Declination \_\_\_\_\_  
 Declination applied to this figure?  
 Yes  No



Locality



Sketched by: Ahmed

Scale: Not to scale

Date: 08-05-2023