

MALDIVES LAND AND SURVEY AUTHORITY

MINISTRY OF HOUSING AND INFRASTRUCTURE

Office (PABX): +(960) 3004300, Fax: +(960) 3004254

Ameenee Magu, Maafannu, Male', 20392, Maldives.

Email: survey@housing.gov.mv

Web: www. surveyofmaldives.gov.mv



CONTROL POINT DETAILS	Station Number PSM0536
Coordinate Information	
Geodetic	Grid
WGS 84	UTM Zone 43
Lat:	E: 327660.118
Long:	N: 201396.098
Ellp Height:	Orth Height: 1.535
Island Name: L. Gaadhoo (LD0261)	Date: 08-09-2022

Monument description & method of survey

- Monument type A. Concrete casted in situ to a diameter 0.3m pvc pipe, 1m in length, 1.5m s/s rod driven to ground with center point cross marked. Monument labeled with s/s plate stating the point ID
- Above 100mm from ground level
- Static Survey 3D control by GNSS post processing including point 106
- Vertical height corrected using tide prediction data (Hulhule) using Water level point (106)
- Inter-visible to PSM0537
- Monument established by LaMer Pvt Ltd for LECRed Project.

General site condition & access:

- Located at Middle of the island (Western side), near the old settlement (Western end of Old Fareedhee Magu)
- Easily Accessible

Owner: Agro National Corporation

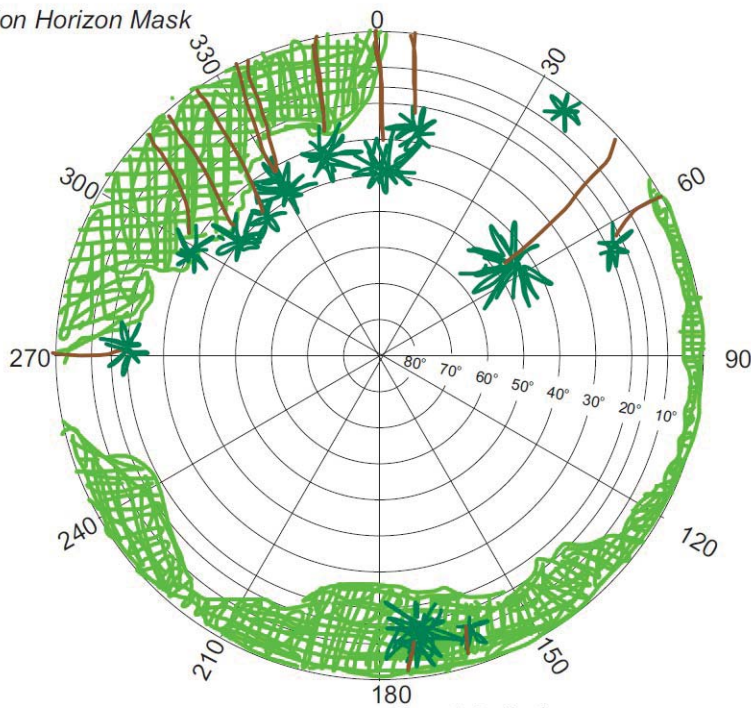


SITE INFORMATION

Station Number

P	S	M	0	5	3	6
---	---	---	---	---	---	---

Station Horizon Mask



Height above Marker that horizon was mapped from 1.5 m

Magnetic Declination
Declination applied to this figure?
 Yes No

Locality



Sketched by: Ahmed

Scale: Not to scale

Date: 11-09-2022

MALDIVES LAND AND SURVEY AUTHORITY

MINISTRY OF HOUSING AND INFRASTRUCTURE

Office (PABX): +(960) 3004300, Fax: +(960) 3004254

Ameenee Magu, Maafannu, Male', 20392, Maldives.

Email: survey@housing.gov.mv

Web: www. surveyofmaldives.gov.mv



CONTROL POINT DETAILS	Station Number PSM0537
Coordinate Information	
Geodetic	Grid
WGS 84	UTM Zone 43
Lat:	E: 327942.806
Long:	N: 201315.959
Ellp Height:	Orth Height: 0.911
Island Name: L. Gaadhoo (LD0261)	Date: 08-09-2022

Monument description & method of survey

- Monument type A. Concrete casted in situ to a diameter 0.3m pvc pipe, 1m in length, 1.5m s/s rod driven to ground with center point cross marked. Monument labeled with s/s plate stating the point ID
- Above 100mm from ground level
- Static Survey 3D control by GNSS post processing including point 106
- Vertical height corrected using tide prediction data (Hulhule) using Water level point (106)
- Inter-visible to PSM0536
- Monument established by LaMer Pvt Ltd for LECRed Project.

General site condition & access:

- Located at Middle of the island (Eastern side) near the old settlement (Eastern end of Old Fareedhee Magu)
- Easily Accessible

Owner: Agro National Corporation



DOWN TOWARD PSM



Height 1.0m Distance 4m
NORTH VIEW



Height 1.2m Distance 4m
EAST VIEW



Height 1.5m
FROM PSM UPTOWARD SKY



Height 0.5m Distance 0m
SOUTH VIEW



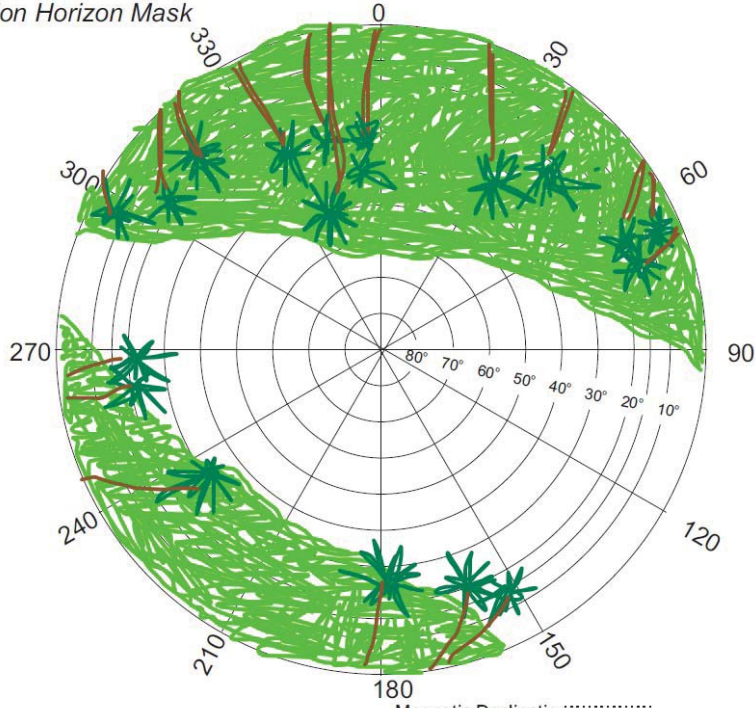
Height 1.0m Distance 0m
WEST VIEW

SITE INFORMATION

Station Number

P	S	M	0	5	3	7
---	---	---	---	---	---	---

Station Horizon Mask



Height above Marker that horizon was mapped from 1.5 m

Locality



Sketched by: Ahmed

Scale: Not to scale

Date: 11-09-2022

MALDIVES LAND AND SURVEY AUTHORITY

MINISTRY OF HOUSING AND INFRASTRUCTURE

Office (PABX): +(960) 3004300, Fax: +(960) 3004254

Ameenee Magu, Maafannu, Male', 20392, Maldives.

Email: survey@housing.gov.mv

Web: www. surveyofmaldives.gov.mv



CONTROL POINT DETAILS	Station Number PSM5372
Coordinate Information	
Geodetic	Grid
WGS 84	UTM Zone 43
Lat:	E: 328004.400
Long:	N: 201772.482
Ellp Height:	Orth Height: 1.103
Island Name: L. Gaadhoo (LD0261)	Date: 08-09-2022

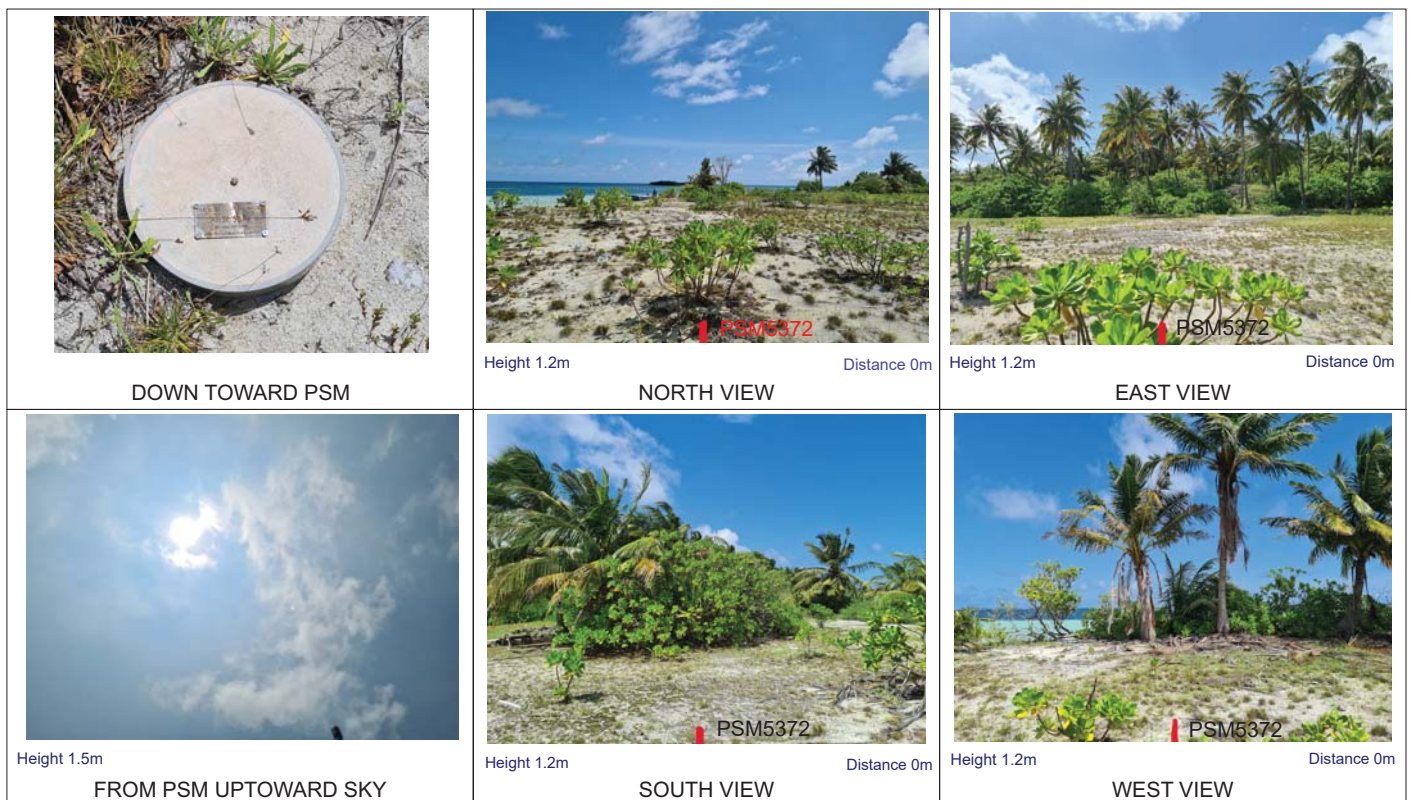
Monument description & method of survey

- Monument type A. Concrete casted in situ to a diameter 0.3m pvc pipe, 1m in length, 1.5m s/s rod driven to ground with center point cross marked. Monument labeled with s/s plate stating the point ID
- Above 100mm from ground level
- Static Survey 3D control by GNSS post processing including point 106
- Vertical height corrected using tide prediction data (Hulhule) using Water level point (106)
- Monument established by LaMer Pvt Ltd for LECRed Project.

General site condition & access:

- Located near open space near harbour area
- Easily Accessible

Owner: Agro National Corporation

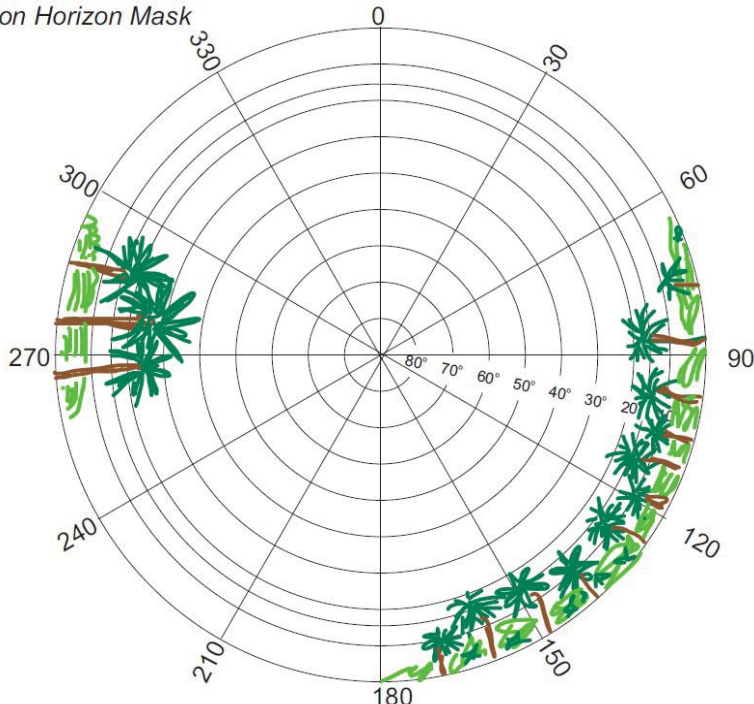


SITE INFORMATION

Station Number

P	S	M	5	3	7	2
---	---	---	---	---	---	---

Station Horizon Mask



Height above Marker that horizon was mapped from 1.5 m

Magnetic Declination
 Declination applied to this figure?
 Yes No

Locality



Sketched by: Ahmed

Scale: Not to scale

Date: 11-09-2022